

## #1258 CHALBI

DESIGNED BY JULIE TURJOMAN



Valley Superwash Bulky makes this gender neutral beanie as quick to knit as it is adorable and warm to wear. Sized to fit babies and toddlers, your favorite little rabbit or fox will love wearing this hat as much as knitters will enjoy making it. Simple stitch patterns make it a perfect project for both new and experienced knitters.

**Skill Level:** Advanced Beginner

**Sizes:** S (M, L).

**Finished Measurements:**

Fits Head Circumference: 16 (18¼, 20½)" diameter. Shown is Size M.

**Yarn Requirements:**

**Color A:** 1 ball Valley Yarns Valley Superwash Bulky (100% Extra Fine Superwash Merino Wool, 100g / 109yds). Color: 04 Rust.

**Color B:** 1 ball Valley Yarns Valley Superwash Bulky, Color: 02 Tan.

**Needles:**

US 10 (8.0 mm) 16" circ needles and dpn, or size needed to get gauge.

US 9 (7.5 mm) 16" circ needles and dpn (for ears).

**Other Materials:** Stitch markers, large tapestry needle.

**Gauge:**

14 sts and 16 rows = 4" in stockinette st on larger needles, blocked.

16 sts and 20 rows = 4" in stockinette st on smaller needles for ears.

**Notes:**

Beanie is worked in the round in one piece from the ribbed brim to the crown, with decrease shaping. Ears are worked from stitches picked up at the top of the crown. Working the ears on smaller size needles results in a denser knitted fabric that helps the ears stand up. Instructions are provided for both Fox and Rabbit ears.

**Directions:**

Using Color B (Tan) for Fox or Color A (Rust) for Rabbit, larger circ needle, and Long-Tail method, CO 56 (64, 72) sts.

**Video Tutorial for Long-Tail Cast-On Technique:**

<https://www.yarn.com/pages/learning-knitting-videos#knittingbasics>

Being careful not to twist sts, join to work in the rnd, and pm to mark beg of rnd.

**Rnd 1:** \*K1, p1; rep from \* to end.

Rep Rnd 1 until pc meas 2 (2¼, 2½)".

Switch to Color A (Rust) for Fox or Color B (Tan) for Rabbit and stockinette st (knit every rnd), and work even until pc meas 4½ (4½, 5)" from CO edge.

**Crown Dec Shaping:**

**Note:** Change to dpns when the sts no longer fit comfortably on circ needle.

**Dec Rnd 1:** \*K5 (6, 7), k2tog, pm; rep from \* to end of rnd; 8 sts dec'd. 48 (56, 64) sts.

Knit 1 rnd even.

**Dec Rnd 2:** \*Knit to 2 sts before m, k2tog, sl m; rep from \* to end of rnd; 8 sts dec'd.

Continuing in stockinette st, rep Dec Rnd every other rnd 3 (4, 5) more times; 24 (32, 40) more sts dec'd. 16 sts.

**Next Rnd:** K2tog 8 times. 8 sts dec'd; 8 sts.

Break yarn, leaving a 12" tail. Use tapestry needle and yarn tail to gather rem sts, and pull them tightly. Weave yarn tail to WS of work.

### Ears Set Up:

With RS facing and Front of Beanie facing you, meas 1 (1½, 2)" to the left and to the right of center of Crown Top (where sts are gathered from Dec shaping) for Fox and ½ (1, 1½) to the right of center of Crown Top for Rabbit. From that point, pick up sts as directed below, working outward from the starting point. Rep for second ear.

Follow Stitch Guide or Chart to make the ears of your choice.

### Fox Ears:

Using smaller size, short circ needles or dpn and Color A, pick up and knit 9 sts as described above.

**Set-Up Row (RS):** Knit.

**Set-Up Row 2 (WS):** Purl.

**Row 1:** K1, M1L, k7, M1R, k1; 2 sts inc'd. (11 sts)

**Row 2 and all WS rows:** Purl.

**Row 3:** Knit.

**Row 5:** Ssk, k7, k2tog; 2 sts dec'd. (9 sts)

**Row 7:** Ssk, k5, k2tog; 2 sts dec'd. (7 sts)

**Row 9:** Ssk, k3, k2tog; 2 sts dec'd. (5 sts)

**Row 11:** Ssk, k1, k2tog; 2 sts dec'd. (3 sts)

**Row 13:** Cdd; 2 sts dec'd. (1 st)

Break yarn and weave in yarn tail to WS.

### Rabbit Ears:

Note: All slipped sts are slipped as if to purl with yarn in back.

Using smaller size, short circ needles or dpn and Color B, pick up and knit 11 sts as described above.

**Set-Up Row 1 (RS):** Knit.

**Set-Up Row 2 (WS):** Purl.

**Row 1 (RS):** K2, p1, sl1, k3, sl1, p1, k2.

**Row 2 (WS):** P2, k1, p5, k1, p2.

**Rows 3–6:** Rep Rows 1 and 2 twice more.

**Row 7:** Ssk, p1, sl1, k3, sl1, p1, k2tog; 2 sts dec'd. (9 sts)

**Row 8:** P1, k1, p5, k1, p1.

**Row 9:** K1, p1, sl1, k3, sl1, p1, k1.

**Rows 10 and 11:** Rep Rows 8 and 9.

**Row 12:** Rep Row 8.

**Row 13:** Ssk, p1, sl1, k1, sl1, p1, k2tog; 2 sts dec'd. (7 sts)

**Row 14:** P1, k1, p3, k1, p1.

**Row 15:** K1, p1, sl1, k1, sl1, p1, k1.

**Rows 16 and 17:** Rep Rows 14 and 15.

**Row 18:** Rep Row 14.

**Row 19:** Ssk, p1, sl1, p1, k2tog; 2 sts dec'd. (5 sts)

**Row 20:** [P1, k1] twice, p1.

**Row 21:** K1, p1, sl1, p1, k1.

**Row 22:** Repeat row 20.

**Row 23:** Ssk, sl1, k2tog; 2 sts dec'd. (3 sts)

**Row 24:** BO.

Break yarn and weave yarn tail to WS.

#### Abbreviations:

**Beg:** begin(ning); **BO:** bind off; **Circ:** circular; **CO:** Cast on; **Dec:** decrease; **Dpn(s):** double pointed needle(s); **Inc:** increase; **K:** knit; **K2tog:** knit 2 sts together (1 st dec'd); **M:** marker; **Meas:** measures; **Pc:** piece; **Pm:** place marker; **Rem:** remain; **Rep:** repeat; **Rnd:** round; **RS/WS:** right side/wrong wide; **Sl:** slip; **Ssk:** slip 2 sts separately knitwise then knit slipped sts together through back loops (1 st dec'd); **St(s):** stitch(es).

**Cdd (centered double decrease):** Sl 2 sts together as if to knit them together, knit the next st, pass 2 slipped sts over the st just knit - 2 sts dec'd.

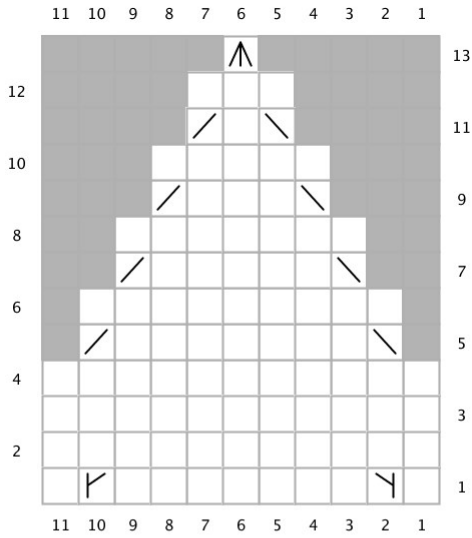
**M1L (make 1 left):** Use LH needle to lift strand between last st worked & first st on LH needle from front to back, then knit it through back of the strand - 1 st inc'd.

**M1R (make 1 right):** Use LH needle to lift strand between last st worked & first st on LH needle from back to front, then knit it through front of the strand - 1 st inc'd.

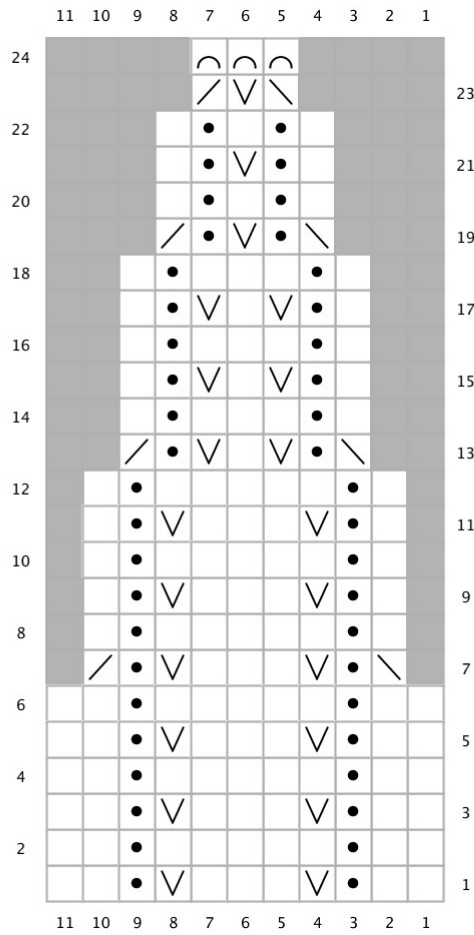
#### Video Tutorial for Make 1:

<https://www.yarn.com/blog/entries/how-to-knit-make-1-increases>

## Fox Ears Chart (Make 2):



## Rabbit Ears Chart (Make 2):



### Key

- RS: knit  
WS: purl
- RS: ssk
- RS: k2tog
- RS: purl  
WS: knit
- V RS: slip wyib
- Y RS: M1L
- Y RS: M1R
- ^ RS: cdd
- C bind off
- No stitch

If you have questions about this pattern, or believe you have spotted an error, please contact WEBS for assistance at [customerservice@yarn.com](mailto:customerservice@yarn.com).