



# Yarnsiving Bottle Cozy

# Yarnsiving Bottle Cozy

## SIZE

10" circumference x 14" tall

## GAUGE

22 sts x 32 rounds = 4" in stockinette stitch

**Be sure to check your gauge.**

## MATERIALS

- Cascade Yarns 220 Superwash: 100% Superwash Wool; 100 g (3.5 oz) / 220 yds (200 m) 1 skein of color #253 Desert Sun (A) 1 skein of color #858 Dark Ginger (B) 1 skein of color #862 Walnut Heather (C) 1 skein of color #1961 Camel (D)
- US 6 (4.0 mm) double pointed needles
- Yarn needle



INTERMEDIATE

## BEGIN PATTERN

With A cast on 56  
Join in the round, careful not to twist  
K2, P2 for 6 rounds

Change to B  
Row 1 - K1, Sl1, P1, Sl1  
Row 2-6 - K2, P2

Change to C  
Row 1 - K1, Sl1, P1, Sl1  
Row 2-6 - K2, P2

Change to A  
Row 1 - K1, Sl1, P1, Sl1  
Row 2 - K2, P2  
Row 3 - K  
Row 4 - K5, YO, K2tog  
Row 5-6 K

Change to C  
Row 1 - K1, Sl1, P1, Sl1  
Row 2-6 - K

Change to A  
Row 1 - K1, Sl1, P1, Sl1  
Row 2 - K

### Acorn Chart

Row 1: C1, A2, C1, A2, C1, A1  
Row 2: A2, C1, A1, C1, A2, C1  
Row 3: A1, C1, A1, C1, A1, C1, A2  
Row 4: C1, A2, C1, A2, C1, A1  
Row 5: A2, C3, A2, C1  
Row 6: A1, C5, A2  
Row 7: C7, A1  
Row 8: C7, A1  
Row 9: A1, C1, A3, C1, A2  
Row 10: A1, C1, A3, C1, A2  
Row 11: A2, C1, A1, C1, A2, C1  
Row 12: C1, A2, C1, A2, C1, A1  
K 2 rounds

Change to C  
Row 1 - K1, Sl1, P1, Sl1  
Row 2-6 - K

Change to B  
Row 1 - K1, Sl1, P1, Sl1  
Row 2-6 - K

Change to D  
Row 1 - K1, Sl1, P1, Sl1  
Row 2 - K

### Leaf Chart

Row 1: C3, A4  
Row 2: C1, A1, C3, A2  
Row 3: C2, A1, C2, A2  
Row 4: A1, C2, A1, C2, A1  
Row 5: A1, C3, A1, C1, A1  
Row 6: A3, C3, A1  
Row 7: A6, C1  
Row 8: C7  
Row 9: A6, C1  
Row 10: A3, C3, A1  
Row 11: A1, C3, A1, C1, A1  
Row 12: A1, C2, A1, C2, A1  
Row 13: C2, A1, C3, A1  
Row 14: C1, A1, C3, A2  
Row 15: C3, A4

K 1 row in D

Change to B  
Row 1 - K1, Sl1, P1, Sl1  
Row 2-6 - K

Change to C  
Row 1 - K1, Sl1, P1, Sl1  
Row 2-6 - K

Change to A  
Row 1 - K1, Sl1, P1, Sl1  
Row 2-6 - K

Change to B  
Row 1 - K1, Sl1, P1, Sl1  
Row 2-6 - K

Change to D  
Row 1 - K1, Sl1, P1, Sl1  
Row 2 - K

Start decreases:  
Row 1 - K6, K2tog  
Row 2 - K5, K2tog  
Row 3 - K4, K2tog  
Row 4 - K3, K2tog  
Row 5 - K2, K2tog  
Row 6 - K1, K2tog  
Row 7 - K2tog

## FINISHING

Cut yarn and weave through remaining stitches.

With B, create a 2 stitch iCord to pull through eyelets to make a bow.  
Icord: Cast on 2 stitches. \*Knit across, do not turn. Slide work to opposite end of dpn. Repeat from \* until 16" long

## ABBREVIATIONS

K = Knit

Sl = Slip 1

Yo = Yarn over

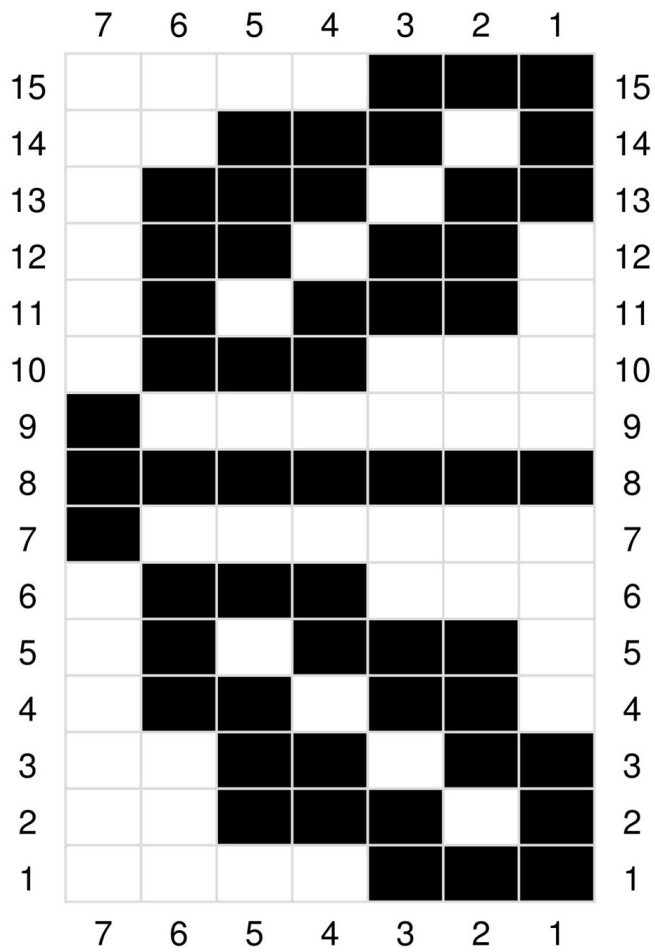
K2tog = Knit 2 together

P = Pearl

## KNIT



## Leaf Chart



## Acorn Chart

