



CROCHET | SKILL LEVEL: INTERMEDIATE

## ABBREVIATIONS

**Approx** = Approximately

**Beg** = Beginning

**Ch** = Chain(s)

**Pat** = Pattern

**Rep** = Repeat

**Rnd** = Round

**RS** = Right side

**Sc** = Single crochet

**Sl st** = Slip stitch

**St(s)** = Stitch(es)

**Tog** = Together

**Tr** = Treble crochet

**Trbp3(6)tog** = [(Yoh) twice and draw up a loop around post of next stitch at back of work, inserting hook from right to left. (Yoh and draw through 2 loops on hook) twice] 3(6) times. Yoh and draw through all 4(7) loops on hook.

**Yoh** = Yarn over hook

## MEASUREMENTS

Approx 15" x 90" [38 x 228.5 cm]

## GAUGE

15 sc and 16 rows = 4" [10 cm].

## INSTRUCTIONS

Ch 77 (multiple of 12 ch + 5). See diagram on page 2.

**1st row:** (RS). 3 tr in 5th ch from hook (skipped ch-4 counts as tr). Ch 1. Skip next 5 ch. 1 sc in next ch. Ch 1. Skip next 5 ch. \*(3 tr. Ch 3. 3 tr) in next ch. Ch 1. Skip next 5 ch. 1 sc in next ch. Ch 1. Skip next 5 ch. Rep from \* to last ch. 4 tr in last ch. Turn.

**2nd row:** Ch 1. 1 sc in first tr. \*Ch 5. Trbp6tog around next 6 tr (skipping center ch-1, sc and ch-1). Ch 5. 1 sc in next ch-3 sp. Rep from \* ending last rep with 1 sc in top of ch-4. Turn.

**3rd row:** Ch 1. 1 sc in first sc. \*Ch 1. (3 tr. Ch 3. 3 tr) in top of next Trbp6tog. Ch 1. 1 sc in next sc. Rep from \* to end of row. Turn.

**4th row:** Ch 4 (counts as tr). Trbp3tog around next 3 tr. Ch 5. \*1 sc in next ch-3 sp. Ch 5. Trbp6tog around next 6 tr (skipping center ch-1, sc and ch1). Ch 5. Rep from \* to last ch-3 sp. 1 sc in last ch-3 sp. Ch 5. Trbp3tog around last 3 tr. 1 tr in last sc. Turn.

## MATERIALS

**Lily® Sugar'n Cream® Super Size** (4 oz/113 g; 190 yds/174 m)

Overcast (18042)

**6 balls or 1120 yds/1020 m**

Size U.S. G/6 (4 mm) crochet hook **or size needed to obtain gauge.**  
Yarn needle.

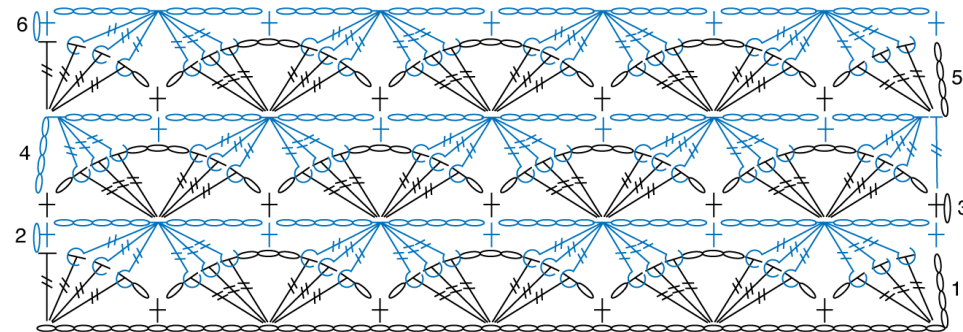


**5th row:** Ch 4 (counts as tr). 3 tr in first tr. Ch 1. 1 sc in next sc. Ch 1. \*(3 tr. Ch 3. 3 tr) in next Trbp6tog. Ch 1. 1 sc in next sc. Ch 1. Rep from \* to last tr. 4 tr in last tr. Turn.  
Rep 2nd to 5th rows for pat until work from beg measures approx 90" [228.5 cm], ending on 2nd row of pat. Turn. **Do not** fasten off.

**Border rnd:** (RS). Ch 1. Work sc evenly around edges of Runner, having 3 sc in each corner. Join with sl st to first sc. Fasten off.



## DIAGRAM



REDUCED SAMPLE OF PATTERN

## STITCH KEY

- = chain (ch)
- = slip stitch (sl st)
- = single crochet (sc)
- = treble crochet (tr)
- or = back post treble crochet 3 together (trbp3tog)
- = back post treble crochet 6 together (trbp6tog)