



MORE TIME TO CREATE

www.gosadi.com

LITTLE LEAF COWL

This pattern is designed by Emma Vining
for the gosadi x CYC x Yarnsgiving collaboration bundle 2024
© 2024, all rights reserved



MATERIALS

NEEDLES:

5mm (UK 6/US 8) knitting needles
5.5mm (UK 5/US 9) knitting needles
Cable Needle

YARN:

Eden Cottage Yarns Hand-Dyed Keld Aran Yarn (90%
Superwash British Bluefaced Leicester Wool, 10% Linen,
180m/196yd per 100g skein)

Shade Falling Leaves; 1 × 100g skeins

OTHER MATERIALS:

3 x buttons
Scissors
Large needle for sewing up
Stitch marker

Yarn amounts given are based on average requirements and are approximate.

The Little Leaf Cable Cowl is a cute, quick-to-knit, neck warmer design which can be knitted with just one ball or skein of aran weight yarn (at least 180yds/160m).

The leaf inspired pattern combines cables with garter stitch texture. As the cables begin to grow, the stitch pattern develops a lovely rhythm, promoting a feeling of relaxation and wellness.

The leaf pattern repeat is worked over the short length of the cowl and the two outer edges are framed with a four stitch cable edging. Three yarn-over buttonholes are worked after the final leaf repeat and the cowl is fastened with three beautiful buttons.

Finished Size: 16cm/6 ¼in (depth) × 66cm/26in (length)

Copyright Emma Vining, 2024, for gosadi x CYC x Yarnsgiving bundle; all rights reserved. This written pattern is for personal use by the purchaser only, and not to be copied or distributed. You are welcome to sell items made from this pattern.

ABBREVIATIONS

cn: cable needle
k: knit
k2tog: knit the next 2 sts together
p: purl
RS: right side
ssk: Slip next 2 sts knitwise one at a time knit these 2sts together through back of loops
sl1 wyif: with yarn at front of work, slip 1st purlwise
st(s): stitch(es)
WS: wrong side
yo twice: yarn over needle twice, and, on next row, work k1, p1 into double-yarnover loop.

CABLE ABBREVIATIONS

C3F: Slip next 2 sts to cn and place at front of work, k1, then k2 from cn.

C3B: Slip next st to cn and place at back of work, k2, then k1 from cn.

C4F: Slip next 2 sts to cn and place at front of work, k2, then k2 from cn.

C4B: Slip next 2 sts to cn and place at back of work, k2, then k2 from cn.

PATTERN NOTES

The Little Leaf Cowl is worked as a narrow rectangle, with buttonholes added near the cast-off edge. After blocking, buttons are attached in the equivalent position at the cast-on edge.

For a longer cowl, which will require additional yarn, work more lengthwise pattern repeats until desired length is reached.

GAUGE:

21 sts × 25 rows to 10cm × 10cm over Leaf Cable Pattern, using 5.5mm needles

Use larger or smaller needles as necessary to obtain correct tension

PATTERN

Leaf Pattern

(worked over 22 sts and 32 rows)

Use charted or written pattern, as preferred.

Row 1 (RS): K22.

Row 2 (WS): P2, k5, p2, k2, p2, k5, p2, k2.

Rows 3 - 4: As rows 1 - 2.

Row 5: K8, C3B, k2, C3F, k6.

Row 6: P2, k4, p3, k2, p3, k4, p2, k2.

Row 7: K7, C3B, k4, C3F, k5.
Row 8: P2, k3, p4, k2, p4, k3, p2, k2.
Row 9: K6, C3B, k6, C3F, k4.
Row 10: P2, (k2, p5) twice, k2, p2, k2.
Row 11: K4, C4B, k8, C4F, k2.
Row 12: P9, k2, p9, k2.
Row 13: K2, C4B, k12, C4F.
Row 14: As row 12.
Row 15: Knit.
Rows 16 - 19: As rows 14 - 15.
Row 20: As row 12.
Row 21: As row 5.
Row 22: As row 12.
Row 23: As row 7.
Row 24: As row 12.
Row 25: As row 9.
Row 26: P6, k1, p2, k2, p2, k1, p6, k2.
Row 27: As row 11.
Row 28: P4, k3, p2, k2, p2, k3, p4, k2.
Row 29: As row 13.
Row 30: As row 2.
Row 31: Knit.
Row 32: As row 2.

Pattern Instructions

Using larger needles, cast on 36 sts.

Leaf Pattern Set-Up

Row 1 (RS): Sl1 wyif, k1, C4B, work Leaf Pattern row 1, k2, C4F, k2.

Row 2 (WS): Sl1 wyif, k1, p4, k2, work Leaf Pattern row 2, p4, k2.

Row 3: Sl1 wyif, k5, work Leaf Pattern row 3, k to end.

Row 4: Sl1 wyif, k1, p4, k2, work Leaf Pattern row 4, p4, k2.

Rows 5-32: Work as rows 1-4, using Leaf Pattern rows 5-32.

Rows 1-32 set the Pattern.

Work these 32 rows another 3 times, then work rows 1-30 once more.

Change to smaller needles.

Buttonhole Border

Row 1 (buttonhole row): Sl1 wyif, k6, patt 1st, (k2tog, yo twice, ssk, k5) 3 times, k2.

Row 2: Sl1 wyif, k1, p4, k2, (k1, p1) into loop, k5, p2, (k1, p1) into loop, p2, k5, (k1, p1) into loop, k2, p4, k2.

Row 3: Sl1 wyif, k1, C4B, k to last 6sts, C4F, k2.

Row 4: Sl1 wyif, k1, p4, k2, p2, k5, p2, k2, p2, k5, p2, k2, p4, k2.

Rows 5-6: Work as border rows 3-4.

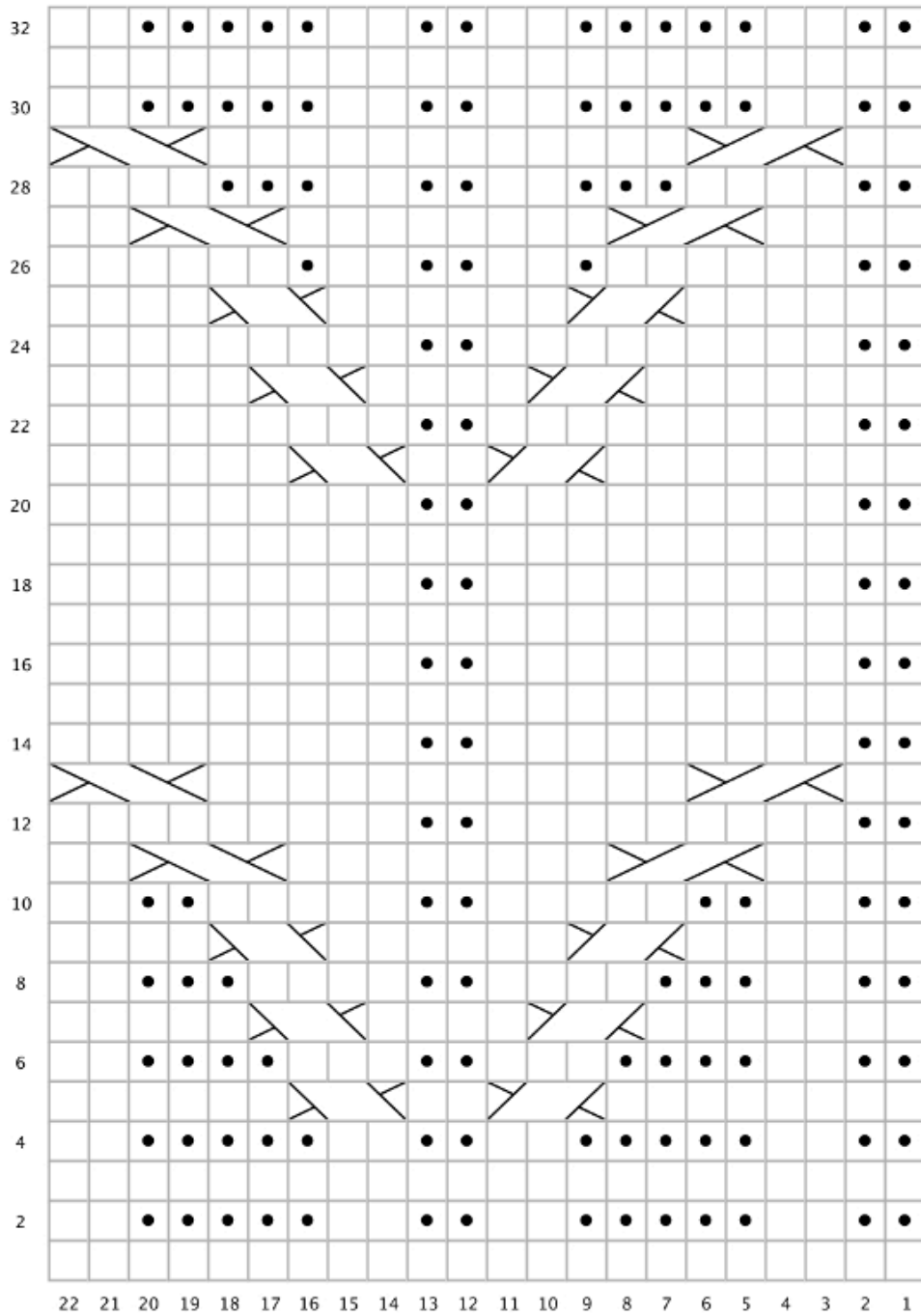
Row 7: Work as border row 3, using Leaf Pattern row 1.

Bind off in pattern.

Finishing

Sew in all loose ends. Block cowl to measurements given and according to ball band instructions.

Attach buttons to approximately 2cm from cast-on edge or to match distance of buttonholes from cast-off edge.



31
29
27
25
23
21
19
17
15
13
11
9
7
5
3
1

- RS: knit
WS: purl
- RS: purl
WS: knit
- C3B
- C3F
- C4B
- C4F

