



# *Sleepy & Sneezzy Crochet Elf Characters*

# Sleepy & Sneezzy Crochet Elf Characters



EASY

## MEASUREMENT

Approx 8" [20.5 cm] tall.

## GAUGE

16 sc and 17 rnds = 4" [10 cm] before stuffing. **Be sure to check your gauge.**

## MATERIALS

- **Red Heart® Super Saver®** (7 oz/198 g; 364 yds/333 m)

### Sleepy

- **Contrast A** Buff (0334)  
1 ball or 62 yds/56.5 m
- **Contrast B** Aruba Sea (0505)  
1 ball or 40 yds/36.5 m
- **Contrast C** Soft White (0316)  
1 ball or 6 yds/5.5 m

### Sneezzy

- **Contrast A** Buff (0334)  
1 ball or 62 yds/56.5 m
- **Contrast B** Gold (0321)  
1 ball or 40 yds/36.5 m
- **Contrast C** Soft White (0316)  
1 ball or 6 yds/5.5 m

### Both Characters

- Size U.S. G/6 [4 mm] Susan Bates® Silvalume® crochet hook **or size needed to obtain gauge.**
- Susan Bates® stitch markers.
- Polyfil stuffing.
- Susan Bates® yarn needle.

## BODY

See Diagrams on page 3.

With A, make a magic loop.

**1st rnd:** (RS). 6 sc in magic loop. **Do not** join, work in continuous rnds. PM for beg of rnd. Move marker up as work progresses.

**2nd rnd:** 2 sc in each sc around. 12 sc.

**3rd rnd:** \*1 sc in next sc. 2 sc in next sc. Rep from \* around. 18 sc.

**4th rnd:** \*1 sc in each of next 2 sc. 2 sc in next sc. Rep from \* around. 24 sc.

**5th rnd:** \*1 sc in each of next 3 sc. 2 sc in next sc. Rep from \* around. 30 sc.

**6th rnd:** \*1 sc in each of next 4 sc. 2 sc in next sc. Rep from \* around. 36 sc.

**7th rnd:** \*1 sc in each of next 5 sc. 2 sc in next sc. Rep from \* around. 42 sc.

**8th rnd:** \*1 sc in each of next 6 sc. 2 sc in next sc. Rep from \* around. 48 sc.

**9th rnd:** \*1 sc in each of next 7 sc. 2 sc in next sc. Rep from \* around. 54 sc.

**10th to 14th rnds:** 1 sc in each sc around.

**15th rnd:** \*Sc2tog. 1 sc in each of next 7 sc. Rep from \* around. 48 sts.

**16th and 17th rnds:** 1 sc in each st around.

**18th rnd:** \*Sc2tog. 1 sc in each of next 6 sc. Rep from \* around. 42 sts.

**19th rnd:** As 16th rnd.

**20th rnd:** \*Sc2tog. 1 sc in each of next 5 sc. Rep from \* around. 36 sts.

**21st rnd:** As 16th rnd.

**22nd rnd:** \*Sc2tog. 1 sc in each of next 4 sc. Rep from \* around. 30 sts.

## ABBREVIATIONS

Approx = Approximately

Beg = Beginning

Ch = Chain(s)

Dc = Double Crochet

Dec = Decrease(ing)

Hdc = Half double crochet

Inc = Increase(d)

PM = Place marker

Rep = Repeat

Rnd(s) = Round(s)

RS = Right side

Sc = Single crochet

Sc2tog = Draw up a loop in each of next 2 sc. Yoh and draw through all 3 loops on hook

Sl st = Slip stitch

Sp(s) = Space(s)

St(s) = Stitches(es)

WS = Wrong side

Yoh = Yarn over hook

**23rd rnd:** \*Sc2tog. 1 sc in each of next 3 sc. Rep from \* around. 24 sts.

Fasten off.

Stuff Body.

## HAT

With B, make a magic loop.

See Diagrams on page 4.

**1st rnd:** (RS). 4 sc in magic loop. **Do not** join, work in continuous rnds. PM for beg of rnd. Move marker up as work progresses.

**2nd rnd:** \*1 sc in next sc. 2 sc in next sc. Rep from \* around. 6 sc.

**3rd rnd:** \*1 sc in each of next 2 sc. 2 sc in next sc. Rep from \* around. 8 sc.

**4th rnd:** 1 sc in each sc around.

**5th rnd:** \*1 sc in each of next 3 sc. 2 sc in next sc. Rep from \* around. 10 sc.

**6th rnd:** As 4th rnd.

**7th rnd:** 2 sc in next st. 1 sc in each sc to end of rnd. (1 sc inc'd). 11 sc.

**8th to 14th rnds:** As 7th rnd. 18 sc.

## CROCHET



**15th rnd:** \*2 sc in next sc. 1 sc in each of next 8 sc. Rep from \* around. 20 sc.  
**16th rnd:** \*2 sc in next sc. 1 sc in each of next 9 sc. Rep from \* around. 22 sc.  
**17th rnd:** \*2 sc in next sc. 1 sc in each of next 10 sc. Rep from \* around. 24 sc.  
**18th rnd:** \*2 sc in next sc. 1 sc in each of next 11 sc. Rep from \* around. 26 sc.  
**19th rnd:** \*2 sc in next sc. 1 sc in each of next 12 sc. Rep from \* around. 28 sc.  
**20th rnd:** \*2 sc in next sc. 1 sc in each of next 13 sc. Rep from \* around. 30 sc.  
**21st rnd:** \*2 sc in next sc. 1 sc in each of next 4 sc. Rep from \* around. 36 sc.  
**22nd rnd:** As 4th rnd.  
**23rd rnd:** \*2 sc in next sc. 1 sc in each of next 5 sc. Rep from \* around. 42 sc.  
**24th rnd:** As 4th rnd.  
**25th rnd:** \*2 sc in next sc. 1 sc in each of next 6 sc. Rep from \* around. 48 sc.  
**26th rnd:** \*2 sc in next sc. 1 sc in each of next 7 sc. Rep from \* around. 54 sc.  
**27th rnd:** \*2 sc in next sc. 1 sc in each of next 8 sc. Rep from \* around. 60 sc.  
 Fasten off. Stuff Hat.

## NOSE

With A, ch 2.

**1st rnd:** 4 sc in 2nd ch from hook. **Do not** join, work in continuous rnds. PM for beg of rnd. Move marker up as work progresses.

**2nd rnd:** 2 sc in each sc around. 8 sc.

**3rd and 4th rnds:** 1 sc in each sc around.

**5th rnd:** (Sc2tog) 4 times. 4 sts. Fasten off. Stuff Nose.

## BEARD

Cut one 6" [15 cm] length of C and tie end in a knot to form a circle.

Cut 20 x 5" [12.5 cm] lengths of C and add as fringe to the circle at opposite end of knot.

## FINISHING

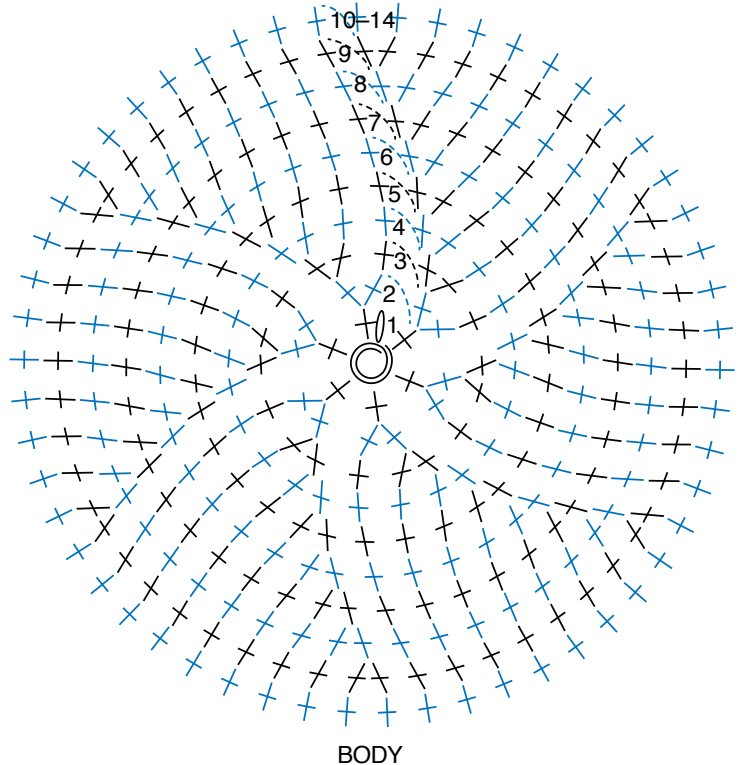
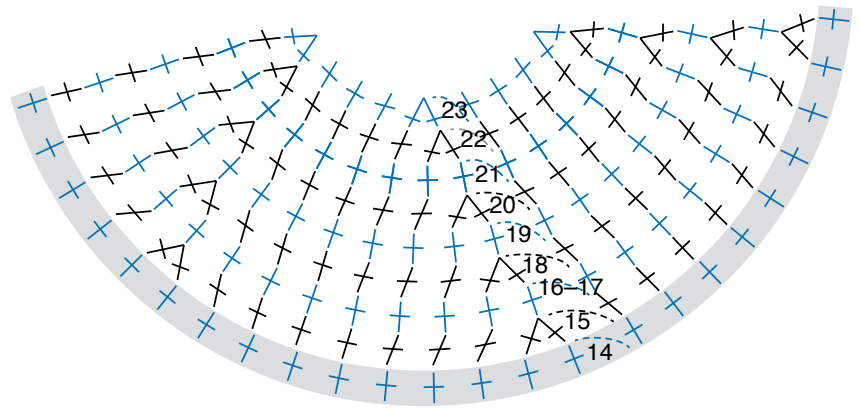
Pin Hat onto Body to find placement

for Nose. Stitch Nose in position.

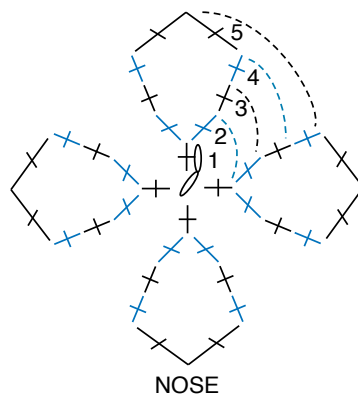
Pull Beard 'ring' under Nose and stitch knot in place to hold Beard in position under Nose

Trim Beard as desired.

Sew Hat to Body over top of Nose.



BODY



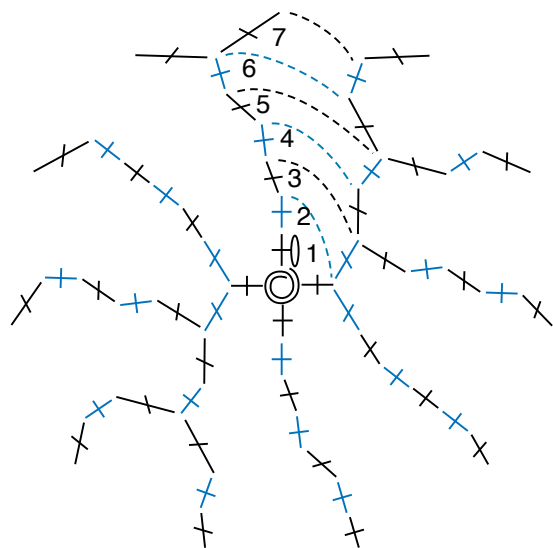
NOSE

## STITCH KEY

- = chain (ch)
- = slip stitch (sl st)
- † = single crochet (sc)
- △ = single crochet 2 together (sc2tog)
- ◎ = magic loop

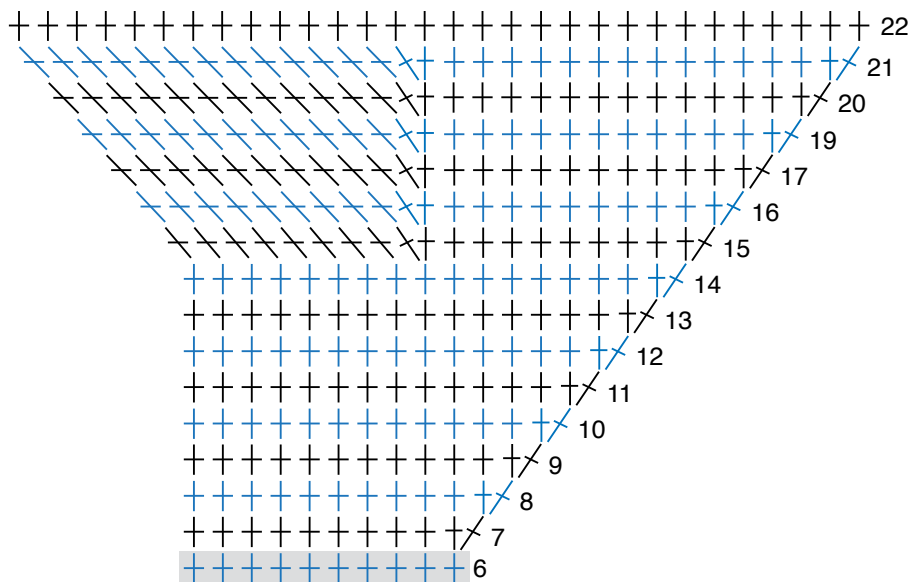
## CROCHET



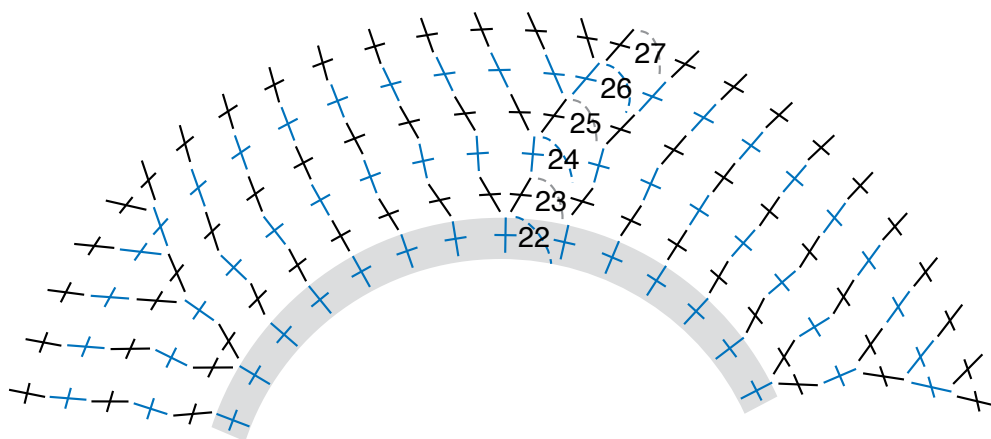


HAT 1st–7th RNDs

- STITCH KEY**
- = chain (ch)
  - = slip stitch (sl st)
  - + = single crochet (sc)
  - Λ = single crochet 2 together (sc2tog)
  - ⊙ = magic loop



HAT 7th–22nd RNDs



HAT 23rd–27th RNDs

## CROCHET

